

# 400S/460SJ

## TELESCOPIC BOOM LIFTS



- Rugged all-terrain telescopic boom lifts
- Powerful 4 wheel drive
- Ultra-tight turning radius
- Fully proportional boom functions
- Simple to operate and easy to maintain

 **snorkel**  
[www.snorkellifts.com](http://www.snorkellifts.com)

# TELESCOPIC BOOM LIFTS

# 400S/460SJ

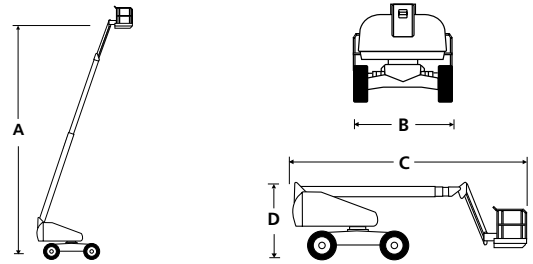
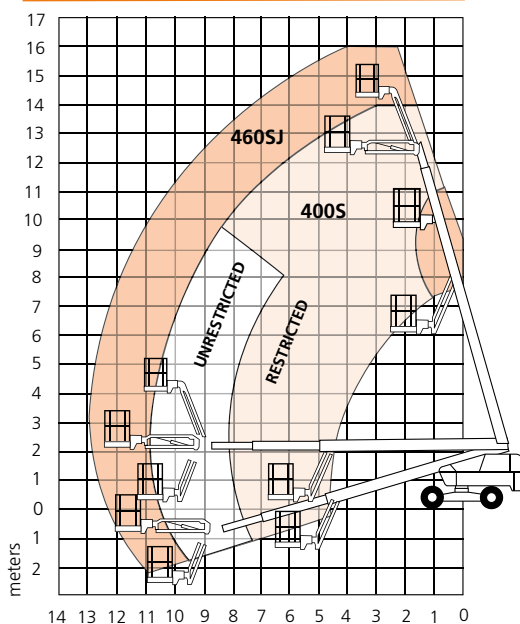
DIMENSIONS	400S**	460SJ**
Max. working height	14.2m	16.0m
Max. platform height (A)	12.2m	14.0m
Max. horizontal reach	10.1m	12.8m
Platform size	2.44m x 0.91m	2.44m x 0.91m
Overall width (B)	2.31m	2.31m
Transport width	2.08m	2.08m
Transport height	2.38m	3.07m
Transport length	5.57m	6.55m
Stowed length (C)	7.57m	8.6m
Stowed height (D)	2.38m	2.38m
Ground clearance	317mm	317mm

PERFORMANCE		
Platform capacity (SWL) unrestricted	272kg	272kg
Platform capacity (SWL) restricted	454kg	n/a
Max. drive height	12.2m	14.0m
Max. wind speed	12.5m/s	12.5m/s
Max. drive speed (stowed)	6.4km/h	6.4km/h
Max. drive speed (elevated)	1.2km/h	1.2km/h
Jib length	n/a	2.0m
Jib arc	n/a	135° (+70°/-65°)
Platform rotation	150°	150°
Superstructure rotation (continuous)	360°	360°
Tailswing	0.9m	0.9m
Raise/lower time	64/64 sec	64/64 sec
Gradeability	50%	50%
Inside turning radius	3.0m	3.0m
Outside turning radius	5.06m	5.06m
Tires	355/55 D625 foam filled lug	
Controls	all proportional controls	
Drive system	4 wheel drive	4 wheel drive

POWER		
Power source	Deutz 2.9L 49hp (36.5kw) - Tier 4 Final	
Auxiliary power unit	12V DC	12V DC

WEIGHT		
Weight	7,135kg	7,829kg

## WORKING ENVELOPE



## STANDARD FEATURES

- Snorkel Guard™ secondary guarding system
- 2.0m 135° jib (460SJ)
- Hydraulic platform rotation
- Oscillating axle
- Horn
- Four wheel drive
- All proportional controls
- Swing-out engine tray
- Motion alarm
- Hour meter & on-board diagnostics display
- Power line to platform
- Tilt alarm & cut-out
- DC emergency operation
- Tri-entry platform
- Flashing amber light
- 2 year parts & labor, 5 year structural warranty
- Platform overload system
- ANSI compliant

## OPTIONS

- Special paint colors
- Airline to platform
- Non-marking tires
- Dual fuel
- AC generator 110V/240V 2kW
- Aircraft package
- Deluxe aircraft package
- Cold weather package
- Extreme cold weather package
- Extreme environment package
- Light package
- Tow kit
- Glazier package
- Environmental hydraulic oil
- 10kW generator package
- 10kW generator/welder package
- Tool tray
- CSA compliant

**snorkel** [www.snorkellifts.com](http://www.snorkellifts.com)

P.O. Box 1160  
 St. Joseph, MO 64502-1160, USA  
 Tel: 1 (785) 989-3000  
 Toll-free: 1 (800) 255-0317  
 Fax: 1 (785) 989-3070  
 Email: sales.usa@snorkellifts.com